

Integrator[®]

Extended Range

**Delivering Group 4/5 ISR capabilities
in an affordable, long-range
Group 3 UAS**



UNCREWED AIRCRAFT SYSTEMS



Integrator ER uses satellite communications (SatCom) to extend flight range beyond line of sight (BLOS), expanding target sets, reducing the logistical footprint and enhancing personnel safety.

KEY FEATURES & BENEFITS

Theater-relevant ranges

- Up to 2,000 nmi point-to-point range (e.g. from Guam to Okinawa)
- Up to 13 hrs time on station at 500 nmi
- Ideal for dispersed island chains, complex coastlines, and open ocean operations

Expanded target set

- Expand tactical UAS access to previously unreachable targets

Multi-mission flexibility

- 40 lb of payloads across up to 10 bays for true MULTI-INT mission sets
- Persistent high-resolution imagery, SIGINT, comms relay, electronic warfare, targeting, and kinetics options
- Rapid reconfigurability in austere environments
- Weather awareness and resilience to wet weather operation

SatCom advances

- Proliferated Low-Earth Orbit (PLEO) constellation and GEO SatCom options available
- Utilizes latest global constellations for reliable, high-throughput data rates
- Commercial and certified encryption options

Fewer bases, reduced footprint

- Reduce downrange footprint and centralize control of dispersed assets
- No-sacrifice VTOL kit preserves endurance, range, payloads and power
- Expeditionary VTOL enables island-hopping, ship-to-shore operations

Enhanced personnel safety

- Keep personnel at safer distances from dangerous environments
- Long endurance reduces deck cycles, minimizing risk and maximizing value



30 YEARS
OPERATIONAL
EXPERIENCE

1.5 MILLION
FLIGHT HOURS

GLOBAL
OPERATIONS

SYSTEM
MODULARITY

SERVICES,
ACQUISITION
AND FMS

LEARN MORE | Contact us at solutions@insitu.com
[insitu.com](https://www.insitu.com)

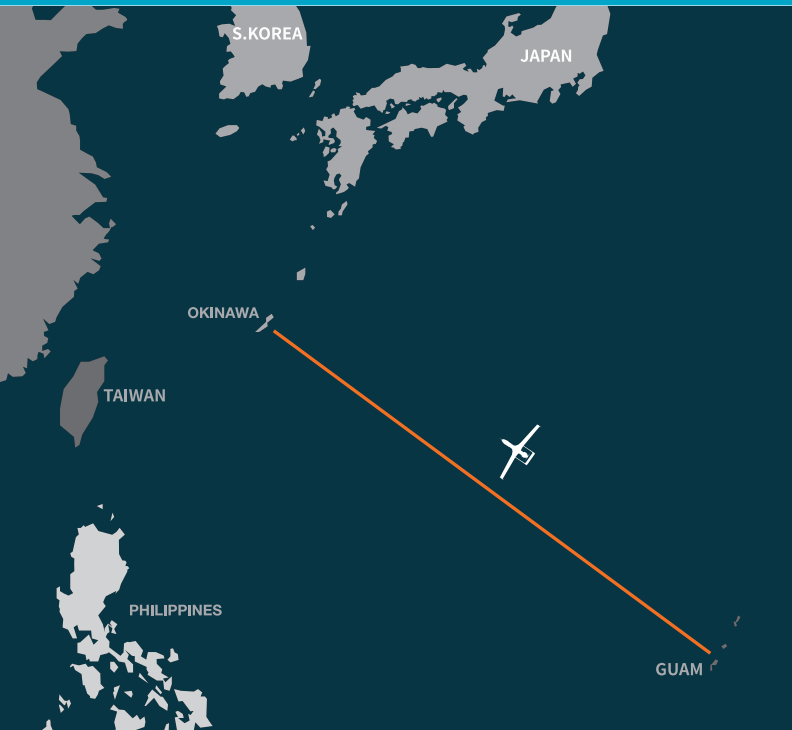
This document consists of basic marketing information subject to change without notice. Non-Technical / Administrative Data Only. Not subject to EAR or ITAR Export Regulations. Items subject to U.S. export controls require a valid license in accordance with EAR or ITAR, as applicable. Copyright © 2025 Insitu. All rights reserved.

DU010825

Integrator[®]

Extended Range

Seamless integration
of tailorable, multi-mission payloads
for unparalleled flexibility



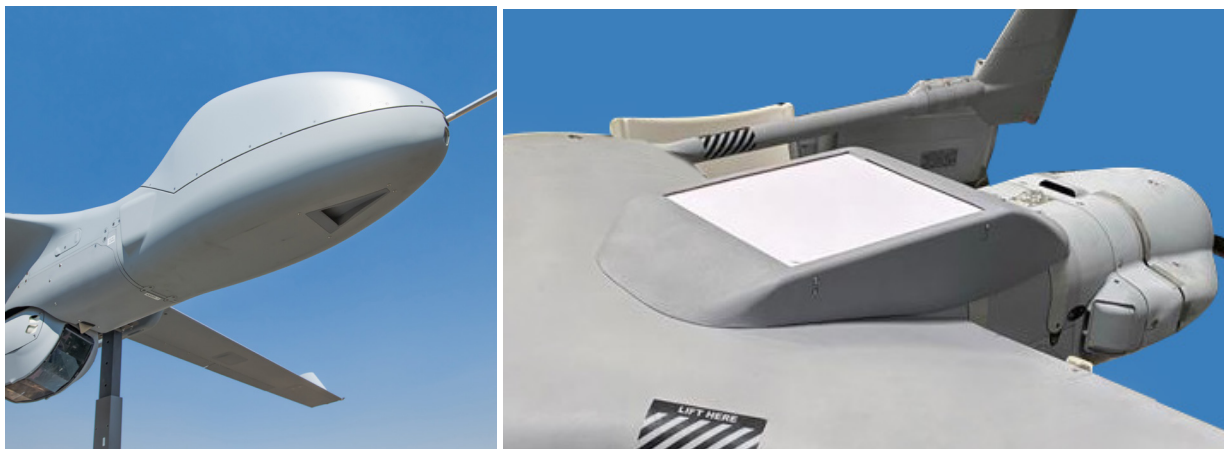
Up to 2,000 nmi point-to-point range

Integrator Extended Range Time on Station (TOS) Estimates

Gross Takeoff Weight: 175 lbs • FMV only

| | |
|----------|--------|
| ● 50 nm | 27 hrs |
| ● 200 nm | 23 hrs |
| ● 300 nm | 18 hrs |
| ● 400 nm | 16 hrs |
| ● 500 nm | 13 hrs |

SPECIFICATIONS



Multiple SatCom options available including solutions for GEO (Geosynchronous Orbit), MEO (Medium-Earth Orbit) and PLEO (Proliferated Low-Earth Orbit)

SIZE AND WEIGHT

- Length: 8.2 ft / 2.5 m
- Wingspan: 15.7 ft / 4.8 m
- Max takeoff weight: 175 lb / 79 kg
- Max payload weight: 40 lb / 18 kg

PERFORMANCE

- Endurance: 27.5 hours
- Ceiling: 20,000 ft / 6,000 m
- Max horizontal speed: 90+ knots / 46 m/s
- Cruise speed: 55 knots / 28 m/s
- Engine: EFI using JP-5/JP-8 fuel

SENSOR AND PAYLOAD OPTIONS

- EO telescope (high-zoom, day FMV)
- MWIR/EO dual sensor (day & night FMV)
- Wide-area maritime search (AI-assisted)
- Laser designator, pointer, rangefinder
- Synthetic Aperture Radar (SAR)
- Alternative Navigation (Alt-Nav)
- Kinetics
- SIGINT, EW, comms relay, and more
- Rapid integration of other customer-specific payloads available

LEARN MORE | Contact us at solutions@insitu.com

[insitu.com](https://www.insitu.com)

This document consists of basic marketing information subject to change without notice. Non-Technical / Administrative Data Only. Not subject to EAR or ITAR Export Regulations. Items subject to U.S. export controls require a valid license in accordance with EAR or ITAR, as applicable. Copyright © 2025 Insitu. All rights reserved.

DU010825